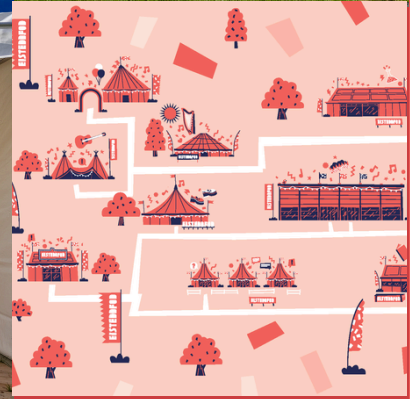
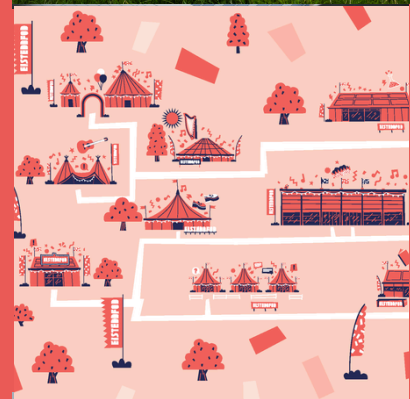
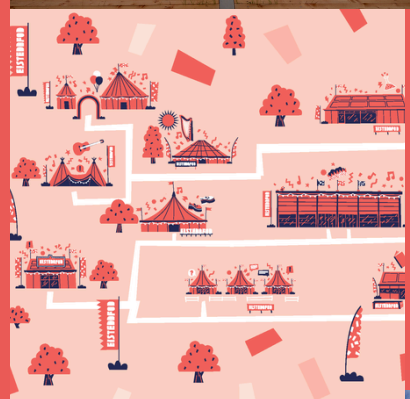


2025 stalls: Information pack

EISTEDDFOD
Wreccsam
2-9 Awst 2025



- **Date: 2–9 August (stalls to open at 10:00 Saturday 2 August)**
- **Location: Wreccsam**
- **Booking opens: 12:00 (mid-day) 3 March 2025**

You must sign that you accept all our terms and conditions before we accept any application.

2025 Eisteddfod Maes

This year's Maes is located on the outskirts of Wreccsam. We have plenty of space for stalls and structures. The site is on attractive agricultural land with excellent access points.

The following stands will be available to book through Ticketsolve (via a link on the Eisteddfod website, www.eisteddfod.wales) on Monday 3 March:

- 3m x 6m stand (single stand)
- 3m x 3m stand (small stand)
- Single wooden hut 3m x 2.5m
- Space in the Third Sector Hub

Please follow the instructions on the system carefully. Book your electricity, water, tables and chairs etc. when completing your order form. You can pay for your stall in one payment or over a three-month period. All payments must be processed to allow access to the Maes.

What stand works for you?

- 3m x 3m stand: Smaller unit - perfect for a small business or company coming to the Eisteddfod for the first time. These will be placed in rows on the Maes. Measurements: front – 3m | depth – 3m | height – 2.4m from the ground (not the floor) to the top of the unit and 3.5m to the top in the middle;
- 3m x 6m stand: A regular unit on the Maes. Stalls will be placed in rows as per usual. Measurements: front – 3m | depth – 6m | height – 2.4m from the ground (not the floor) to the top of the unit and 3.5m to the top in the middle;
- 3m x 2.5m wooden hut: Self-contained hut perfect for a group or small business looking for an alternative and attractive presence on the Maes. Huts will be placed around the Maes. Canopy opens and front entrance folds back. One key per hut, with the spare key stored centrally;
- Third Sector Hub: Specific structure for societies, voluntary and third sector organisations and groups. A chance to share a space with similar organisations in an area between our two Societies pavilions on the Maes. Measurements: 2m x 2m;
- Pentref Celf (Visual Arts Village): Specific area on the Maes, close to Y Lle Celf, aimed at artists and craftspeople. Please note that you'd like to be located in the Village when applying. Wooden huts and 3m x 6m stalls only available in this area;
- Pentref Gwyddoniaeth a Thechnoleg (Science and Technology Village): Wooden huts only in the Science and Technology Village. These are available by application via the Eisteddfod website, rather than through Ticketsolve on 3 March;

We can also source larger and alternative structures to suit your needs. Contact us to find out more.

Set-up

Stands on the Maes can be set-up during the following times:

- Wednesday 30 July: 08:00 –18:00
- Thursday 31 July: 08:00 –18:00
- Friday 1 August: 08:00 –14:00

Following the success of the set-up slots at Rhondda Cynon Taf last year, we'll be operating a pre-set time slot system again this year, to manage the number of vehicles on-site at the same time.

We'll also set a time limit of three hours for vehicles on the Maes for unloading, and any vehicle within the slot will need to be emptied and moved to the stallholders' car park at the end of your slot.

Anyone who intends to bring a vehicle larger than an average van needs to contact us in advance to arrange a set-up time. We'll contact everyone regarding slot booking details before the end of July.

Vehicles on the Maes

Vehicles may only be brought onto the Maes between 06:00 – 07:30 in the morning to load and unload. You'll need the correct vehicle ticket to do this, and driving guidelines will need to be followed on the Maes. We will not allow any vehicles on the Maes at any time apart from the periods stated above.

Take-down

Stands can be taken down during the following times:

- Saturday 9 August: 18:00 –21:00
- Sunday 10 August: 08:00 –18:00

More information available closer to the time.